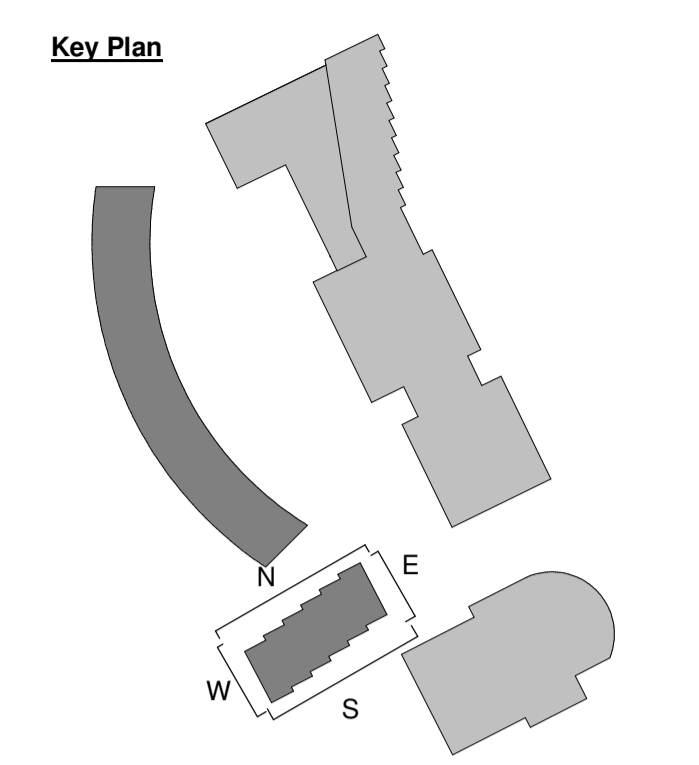
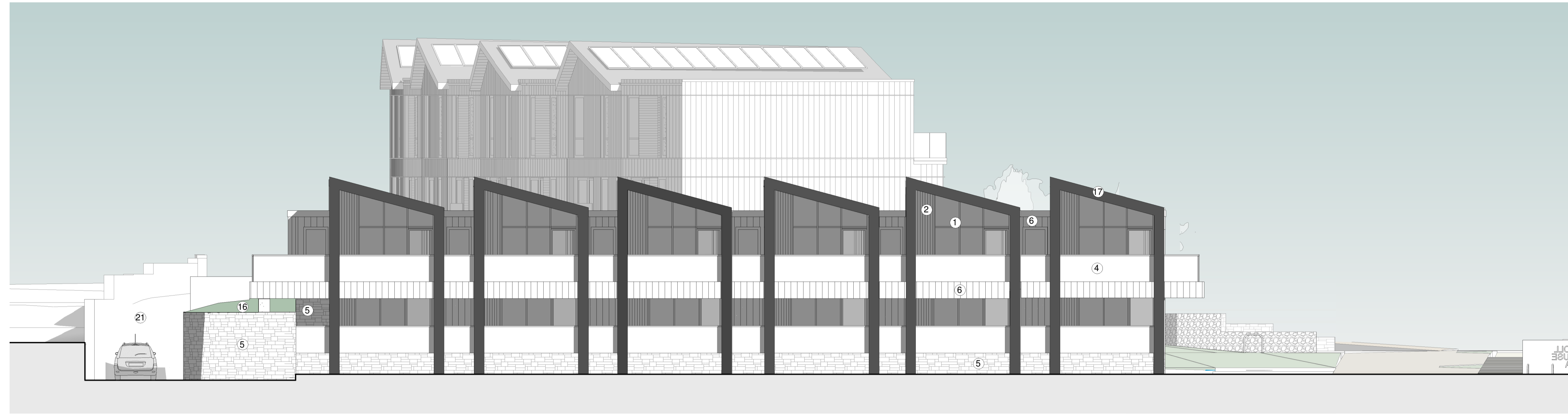


**Notes**  
 Do not scale from this document, unless for the purposes of planning applications where a scale bar is provided. Refer to figured dimensions only. All dimensions to be verified on site prior to construction. Report all discrepancies or ambiguities to the Document Originator immediately. This document is to be read in conjunction with relevant documents, drawings and standards.



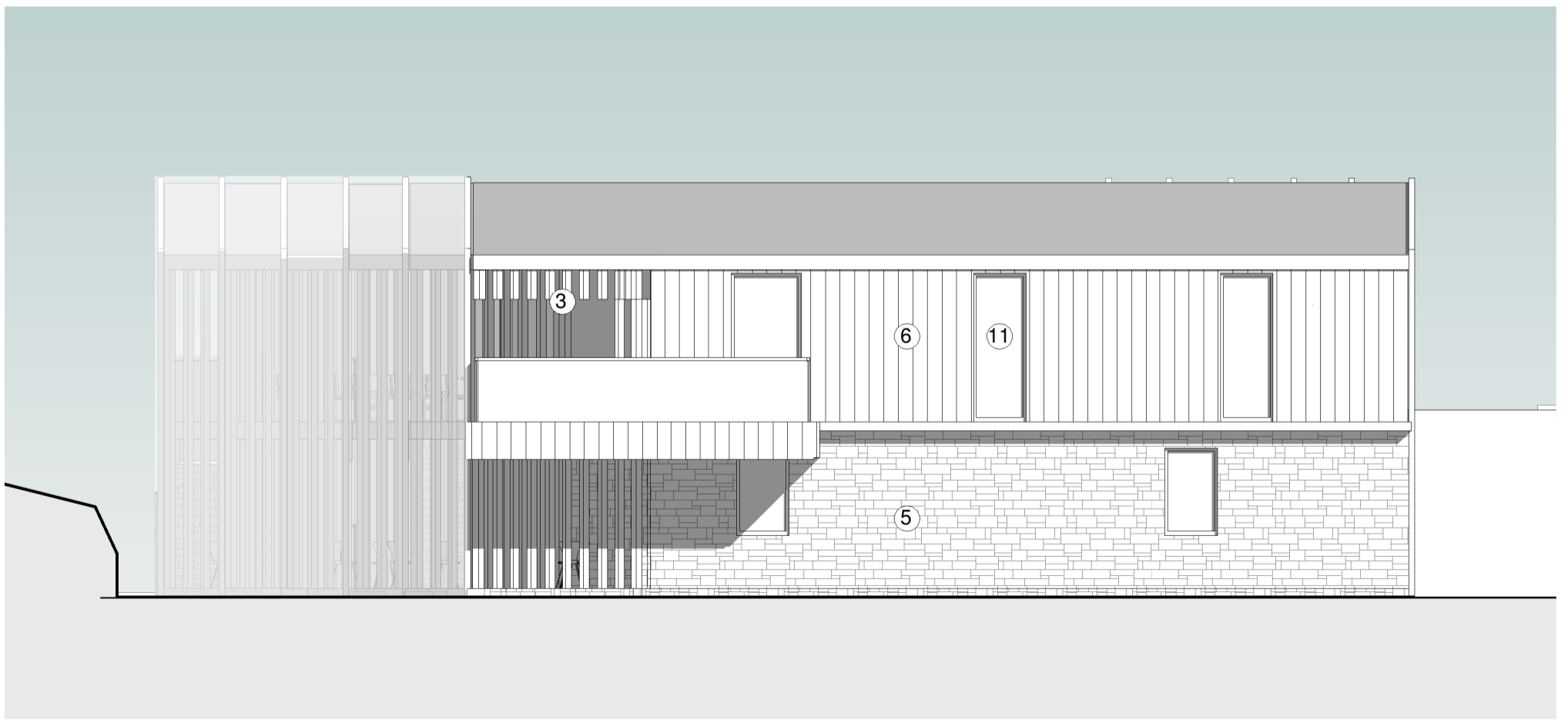
- Proposed Materials**
- 01 Curtain Wall Glazing - Dark Grey Stick System & Matching Doorsets
  - 02 Timber Cladding - Vertical Shiplap
  - 03 Vertical Open Slatted Timber
  - 04 Clear Glazed Frameless Balustrade
  - 05 Purbeck Dressed Stone Wall
  - 06 Standing Seam Natural Grey Zinc
  - 11 Dark Grey Aluminium Doors and Windows
  - 12 Green Wall
  - 13 PV Panels
  - 14 Timber Soffit
  - 15 Mansafe System
  - 16 Extensive Green Roof
  - 17 Pressed Dark Grey Aluminium
  - 18 PPC Grey Toned Aluminium Vertical Railing Balustrade
  - 19 Stone Paving
  - 19 Perforated Dark Grey Aluminium Roller Shutter
  - 20 Timber Cladding - Horizontal Shiplap
  - 21 Planting - climbers/ plants
- Opaque glass



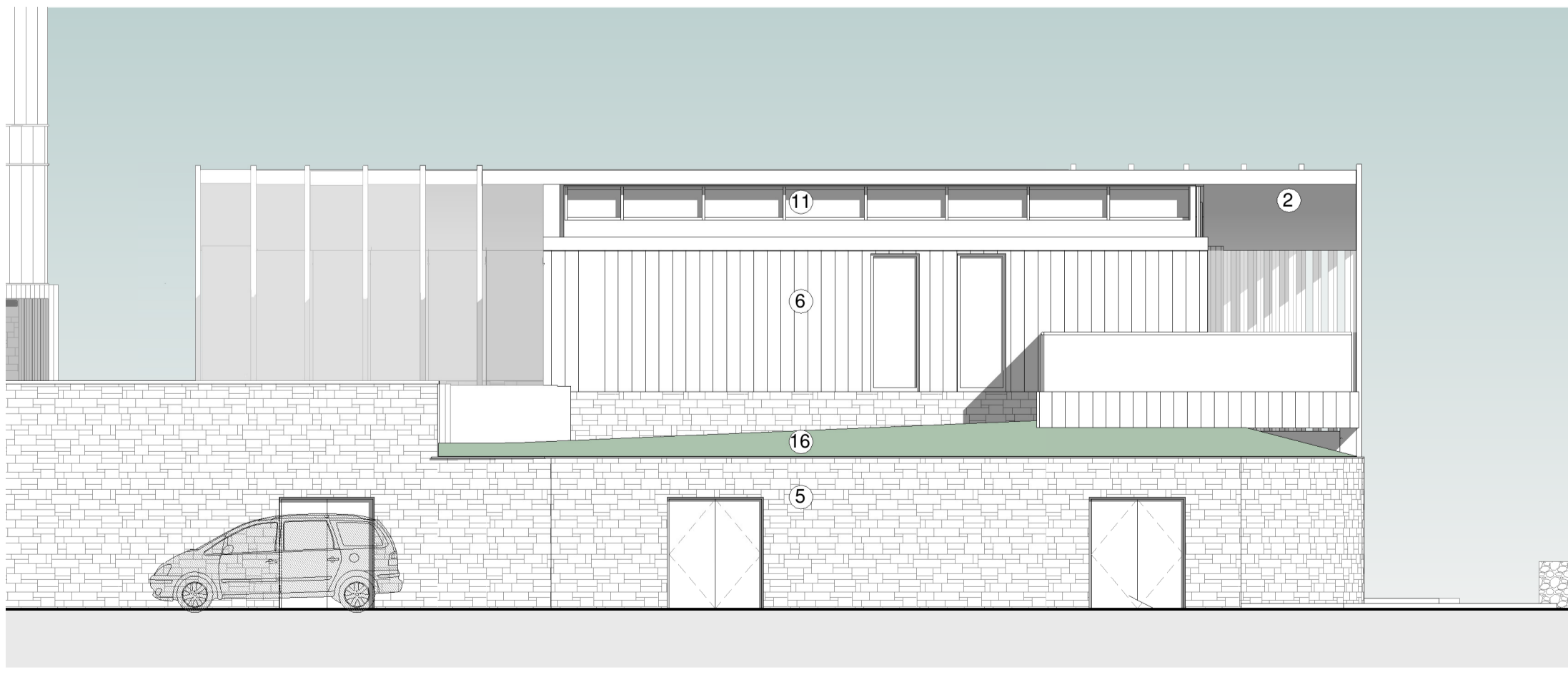
**South Elevation - 2 bed**  
 1 : 100



**North Elevation - 2 bed**  
 1 : 100

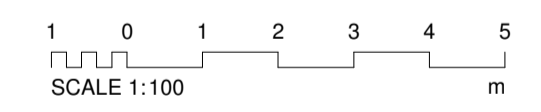


**East Elevation - 2 bed**  
 1 : 100



**West Elevation - 2 bed**  
 1 : 100

Rev	Date	Notes	Dm	Chkd
P03	07/10/22	ISSUED FOR PLANNING		GCT MAS



Document Originator  
**AWW**  
 London 106 Western Street, SE1 3GB 020 7160 6000  
 Plymouth East Quay House, PL4 0HX 01752 261 262  
 Bristol plot + mark, 48-52 Baldwin Street, BS1 1QB 0117 923 2535  
 RIBA Chartered Practice www.aww-uk.com

Client  
 Kingfisher Resorts Studland Ltd

AWW Project Number 4561 Project Stage STAGE 2

Project Title  
 Knoll House Hotel Studland

Title  
 Villas- 2 bed - Proposed Elevations

Project	Origin	Volume	Level	Type	Role	Number	Rev
4561	AWW	T1	ZZ	DR	A	30001	P03